

sedus

Executive swivel chair, Conference swivel chair
of course



**A masterpiece is unmistakable.
It captivates at first glance.**









Luxury is the freedom to surround yourself with the things you like. Don't compromise.

Sedus "of course" comes into its own wherever strategies are developed, corporate destinies determined and issues for the future decided. Be it at the desk or conference table, focusing on the job or engaged in lively debate. Cutting-edge ergonomics optimally support the body and free the mind for the job at hand.



**Leadership is a question of style.
It's time to take command.**





It is not easy to excel. Yet, when achieved, excellence is a source of pleasure.



High-flyers deserve outstanding ergonomics and comfort. Sedus has been guided by this belief for over 140 years. This philosophy has provided a breeding ground for important innovations time and time again. And yet, the creation of a new office swivel chair to meet the most stringent of

demands still presented a unique challenge. A contemporary masterpiece which gave the Sedus product developers and designers free reign to turn their perceptions of quality and comfort, functionality and design into reality.



Innovation. The new “independent fit” technology automatically adjusts the curvature of the backrest to the movements of the upper body: When you lean back, the headrest gently curves forward toward the natural position of the shoulder and head. When you sit straight, the technology automatically realigns the chair to support an upright sitting position. The whole body is continually actively supported without you having to do a thing – providing the ideal starting point for taking a relaxed approach to challenging tasks.

Perfection inspires productivity. And pleasure.



Unmistakable.

The distinctive panels on the backrest and armrests are eye-catching. Their design can be customised in different colours, with high-quality varnishes and woods.



Simple height adjustment up to the individual seat height.

The backrest pressure can be increased/decreased in an instant for users from 50 to 150 kilos using the patented quick adjustment mechanism.



Pre-selectable opening angle of 0, 11, 22 or 32 degrees.

Seat height adjustment.

The patented Sedo-Lift technology with mechanical locking is non-wearing and is able to completely cushion your body weight, even in the lowest sitting position.

Multilayer upholstery.

Three upholstered layers made of different materials with a volume of up to 70 mm ensure optimal pressure distribution and support and thus guarantee maximum sitting comfort.

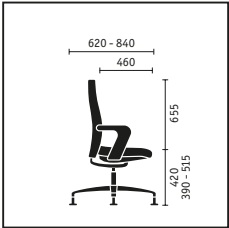
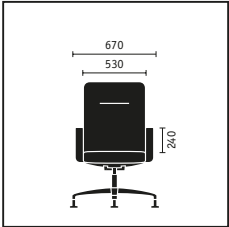
Optimal opening angle.

The opening angle of the backrest can be set to suit individual requirements; operation is intuitive and self-explanatory, as with all functions.

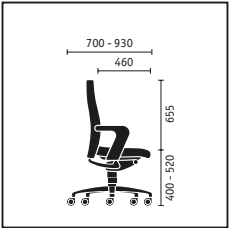
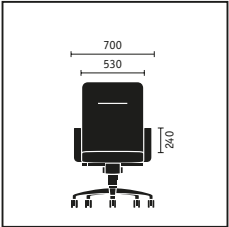
An overview of the Sedus “of course” range:



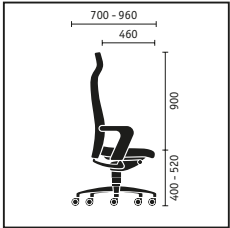
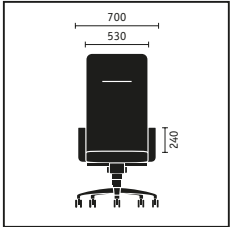
Conference swivel chair,
4-leg model with
felt or plastic glides.



Executive swivel chair
with medium backrest
and castors for soft or
hard floors.



Executive swivel chair
with high backrest and
integrated headrest
with “independent fit”
technology.



	Executive swivel chair with high backrest	Executive swivel chair with medium backrest	Conference swivel chair
Mechanisms			
Similar-Plus mechanism	■	■	
Backrest technical features			
Pre-selectable opening angle (0, 11, 22, 32 degrees)	■	■	
Adjustable backrest pressure	■	■	
Auto-adapting backrest "independent fit"	■		
Seat height adjustment			
Sedo-Lift mechanism	■	■	
Central seat-depth springing (not height-adjustable)			□
Gas lift mechanism with mechanical depth springing			■
Automatic return (seat height not adjustable)			□
Base designs			
Aluminium base, chromed	■	■	■
Aluminium base, polished	□	□	□
Armrest versions for leather-covered models			
Armrests in leather of same colour	■	■	■
Armrests in leather of a different colour	□	□	□
Armrest versions for fabric-covered models			
Armrests in black leather	■	■	■
Panel design (backrest and armrests)			
Panels upholstered in leather	□	□	□
Panels in wood veneer, oak natural	□	□	□
Panels in wood veneer, oak wenge varnish	□	□	□
Panels in wood veneer, walnut natural	□	□	□
Panels in wood veneer, walnut dark	□	□	□
Panels in high gloss varnish, black	■	■	■
Panels in high gloss varnish, white	□	□	□
Features			
Headrest integrated into the backrest	■		
Hard castors for soft floors	■	■	□
Soft castors for hard floors	□	□	□
Plastic glides			■
Felt glides			□
■ standard □ optional			



The aluminium base is available either polished or with a high-quality chrome finish.

Further information and planning data are available to download at:
www.sedus.com

Tested and recommended
 Aktion Gesunder Rücken
 (campaign group for healthier backs)
www.agr-ev.de



Company:



Sedus of course:



Sustainable through and through.

Sustainability and quality “Made in Germany” have been basic corporate principles at Sedus for more than 50 years. These principles are embodied in Sedus *of course* and reflected in the way we work: designing products which are recyclable, using ecologically tested materials, conserving resources, being energy-aware in our manufacturing and conducting ongoing quality tests.

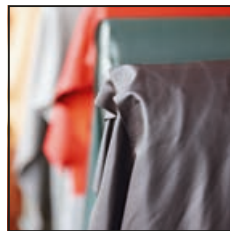
Thus, *of course* is made using a solvent-free powder coating instead of the conventional paint finish. An ultra-modern and extremely environmentally-friendly electroplating process – where the production residue containing metal is completely re-used – is another strand of Sedus’ philosophy of quality and sustainability.

Further information is available at www.sedus.com



Environmentally friendly shine.

At Sedus, perfect chrome finishes also mean a treatment plant that removes production residues from the water.



Never far away.

Highest quality and short transport routes. The leathers used are obtained primarily from Southern Germany and Austria.



Resistant. Fabric quality that is not only durable, but also exemplary in terms of tear and chemical resistance.

Around the world, Sedus adheres to the principles of the UN Global Compact for human rights, labour standards, the environment and anti-corruption.

